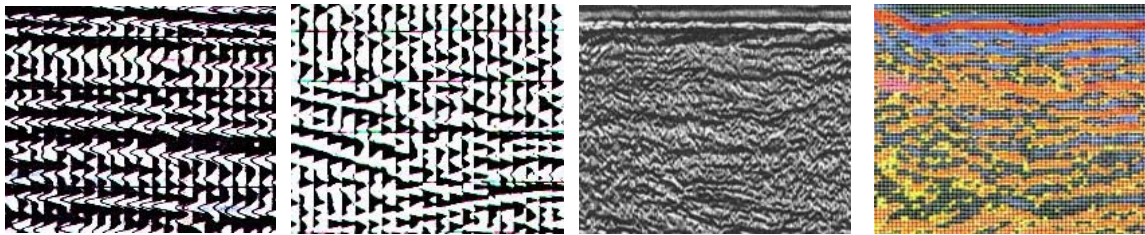


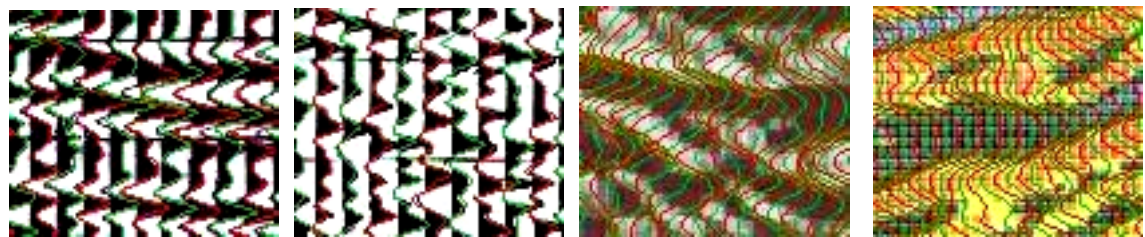
Win_SCAN_SEIS Seismic paper profile digitalization of BMP to SEG-Y/SU format (for Windows 95,98 and NT Xp or Vista)

Digital seismic data have been lost? Except the papers...Never mind...
The new software **Win_SCAN_SEIS** can get out of this fix!!!

You can process all usual types of seismic records. Just scan your data and save as BMP file. This software allows you to merge different BMP, to make scan orthogonal, remove time lines, enter geometry and import XYZ files, create wells and velocity model and more. Digitalized section can be saved in SEG-Y or SU format. Your data can be re-processed (filtering, migration, resampling, header editing) and printed using **Visual_SUNT**



From scan to digitalized profile



Win_SCAN_SEIS offer you many tools to allow you the best coincidence between scanned sections and digitalized profiles.

Well Data

Name: BDB01
Z0 = Altitude: 1065
Datum Plane: 1000
Shot point: 410
X coordinate: 655124
Y coordinate: 133813
V0: 2000

Note: Forage ESSO DNHYM

Level 1

Z (Depth, m): 65 X coordinate (m): 655124
Time (Simple ms): 32.5 Y coordinate (m): 133813
Mean velocity: 2000 m-ft/sec

Horizon color: Topo - Black
 Fault - Red
 Unconformity Majenta
 Light grey

Note: T. lacustrine Limest.

Save + Previous data Save + Next data Save + Close

.NMO file

Cdp list: 28,146,236,313,372,456,530,640

OK

cdp n° 28

Time (TWT, Sec)	V. nmo (m/s)	V. int (m/s)
.1	2100	2100
.2	2225	2343
.34	2425	2685
.4	2475	2741
.44	2525	2979
.55	2600	2881
.7	2750	3241
.92	2900	3333
1	3000	3973
1.6	3500	4203

Close Save

Download the demo version or ask us for a CD (working with a demo set) !

Win_SCAN_SEIS Seismic paper profile digitalization of BMP to SEG-Y/SU format (for Windows 95,98 and NT Xp or Vista)

Example of a paper coloured section processed with **Win_SCAN_SEIS**
(Offshore, Eastern Atlantic Margin)

